

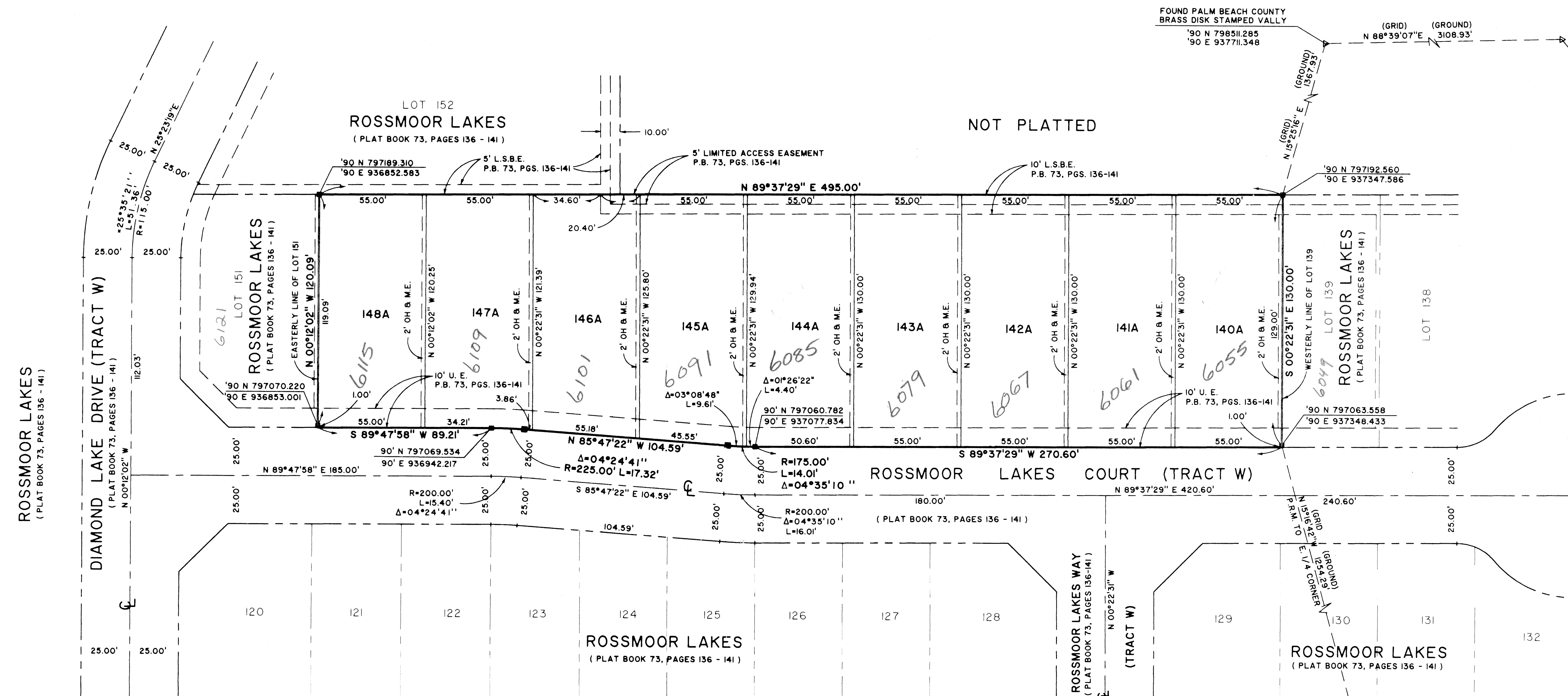
ROSSMOOR LAKES REPLAT NO. 2

0626-003

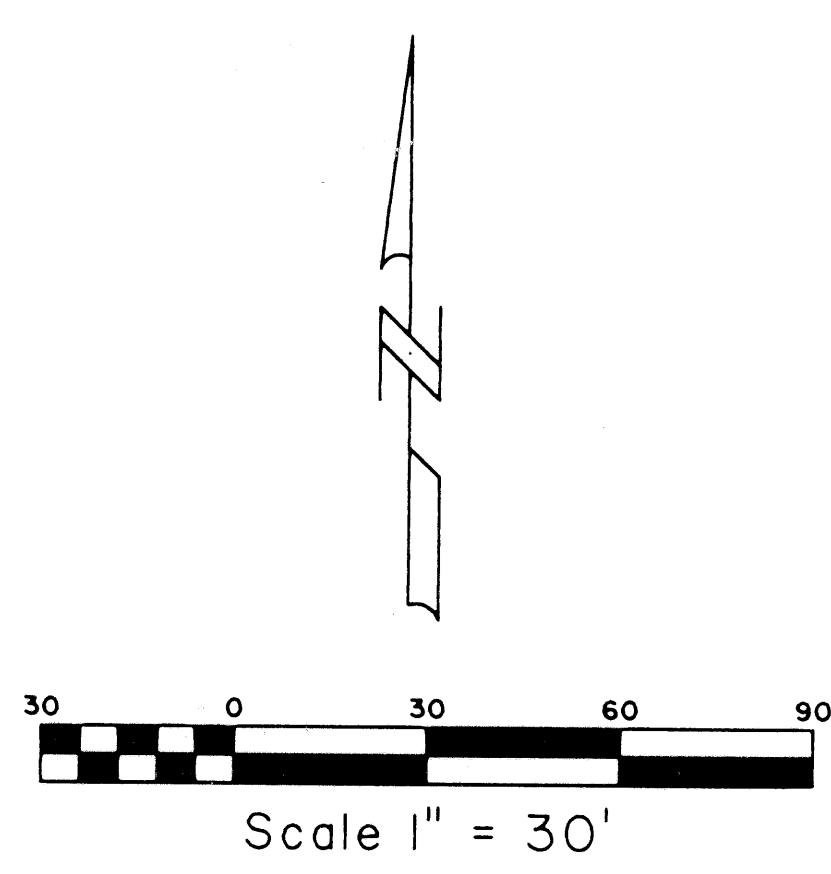
128

BEING A REPLAT OF LOTS 140 THRU 150, INCLUSIVE, ROSSMOOR LAKES AS RECORDED IN PLAT BOOK 73, PAGES 136 THRU 141, INCLUSIVE, PUBLIC RECORDS OF PALM BEACH COUNTY, FLORIDA AND LYING IN SECTION 27, TOWNSHIP 45 SOUTH, RANGE 42 EAST, PALM BEACH COUNTY, FLORIDA.
SHEET 2 OF 2
APRIL, 1998

STATE OF FLORIDA
COUNTY OF PALM BEACH
THIS PLAT WAS FILED FOR RECORD AT
M. THIS DAY OF 19
AND DULY RECORDED IN PLAT BOOK NO.
ON PAGE
DOROTHY H. WILKEN, CLERK OF THE CIRCUIT COURT
BY _____ D.C.



COORDINATE NOTE:
STATE PLANE COORDINATES SHOWN ARE GRID DATUM, NAD 83 1990 ADJUSTMENT, FLORIDA EAST ZONE, COORDINATE SYSTEM 1983 STATE PLANE, TRANSVERSE MERCATOR PROJECTION
LINEAR UNIT = US SURVEY FEET
ALL DISTANCES ARE GROUND
SCALE FACTOR = 1.0000313
GROUND DISTANCE X SCALE FACTOR = GRID DISTANCE
N 00°12'02" W (PLAT BEARING) -00°00'03" COUNTERCLOCKWISE ROTATION
N 00°12'05" W (GRID BEARING) PLAT TO GRID
-THE CENTERLINE OF DIAMOND LAKE DRIVE, AS SHOWN HEREON.



ROSSMOOR LAKES
REPLAT NO. 2
PAGE 128
FLOOD MAP #185A
ZONING RTU
QUAD # 85
SE 98-34
TAZ 152
FID NAME Rossmoor Lakes

FOUND PALM BEACH COUNTY
BRASS DISK STAMPED VALLEY
'90 N 798511.285
'90 E 937711.348

(GRID) (GROUND)
N 88°39'07" E 3108.93'

FOUND PALM BEACH COUNTY
BRASS DISK STAMPED MEDIAN
'90 N 798584.434
'90 E 940819.622

FOUND PALM BEACH COUNTY
BRASS DISK STAMPED FLIP
'90 N 795853.453
'90 E 937678.992

FOUND PALM BEACH COUNTY
BRASS DISK STAMPED 27/26
E. 1/4 OF SECTION 27/45/42
'90 N 793209.108
'90 E 937655.362

Landmark Surveying & Mapping Inc.
1850 Forest Hill Boulevard
Ph. (561) 433-5405 Suite 100 W.P.B. Florida

ROSSMOOR LAKES REPLAT NO. 2